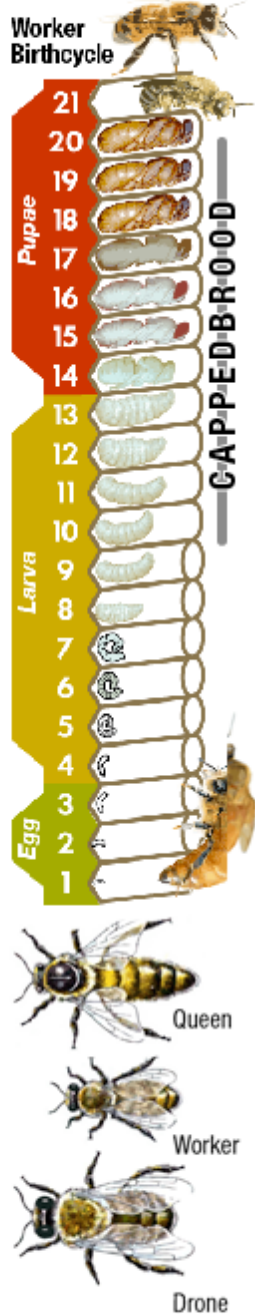


Hive Inspection Checklist



Day: S M **T** W T F S Date 8/31/11 Temperature: 86 Start Time: 3pm

Primary: Jesse Secondary: Charlie Guests: StRobert_School_3rd_Grade

Conditions: ☀️ ☁️ ☁️ ☁️ ☁️ prior week weather: ~~hot~~ ~~normal~~ ~~humid~~ ~~rainy~~ ~~stormy~~

OBSERVATIONS

Outside the Beepod (*observe entrances, watch flight patterns, study bee-havior*)

Activity: Light ~~Moderate~~ Heavy Entrance: ~~Bearding~~ Fanning Guarding Drones Robbers Scratches

Actions: Entering more ~~Exiting more~~ Alt Entrance Pollen ~~Gathering~~ Color(s) orange? yellow Entrances Used: Center ~~Side~~ Both

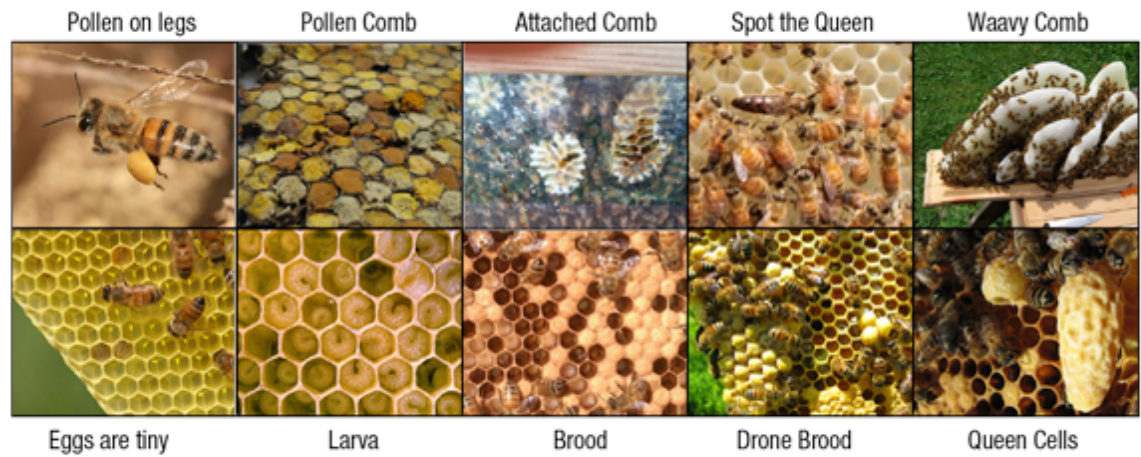
Pop-off Shutters (*observe number of bees, temperament, number of combs, number of attached comb*)

Hive: Full ~~Part Full~~ Sparse Bees: Active ~~Dull~~ Frenzied Defensive Attached combs 2

Lift the Lid (*observe bees outside Inner Chamber, Temperament, Number of Bars, Feeder Jar, Vent Board*)

Bees on Bars ~~Lid~~ Floor Dead Bees Bugs _____ Critters _____ Ventboard: Removed Open Partial Closed

Ventboard space varies with humidity, heat and wind. More humid; more closed.



Daily Temps F (t)
 t < 80 = Vent Removed
 t > 60 = 1/2 - Full Open
 t < 40 = Cracked - 1/4 open

Nightly Temps F (t)
 t > 50 = Cracked - 1/4 open
 t < 70 = 1/2-Full Open
 t > 80 = Remove Vents



PREPARATION

Its important to bee prepared before begining your inspection. Nows the time to ready the smoker, bring the Sting Kit and Washbucket.

- Smoker
- Fuel
- Lighter
- Pencil
- Hive Tool
- Bread Knife
- Jackknife
- Feather
- Sting Kit
- Veil
- Gloves
- Washbucket

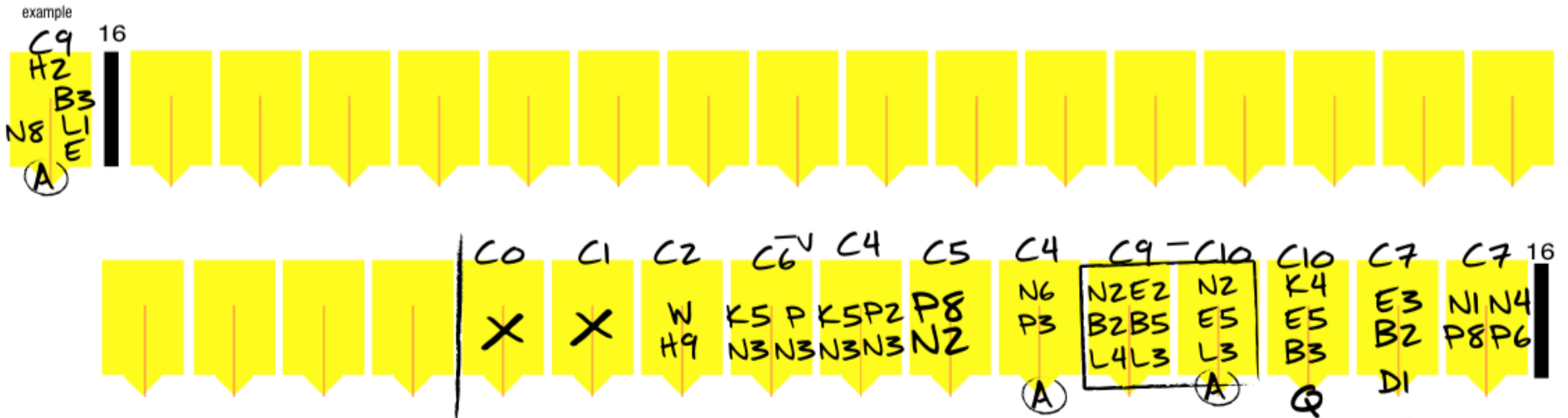
- BEEHAVIOUR** Bees can get ornery during an inspection for a number of reasons. Stings happen any time But its important to note if the hive begins to get more reactive. This is a subjective number but figure 1 = uninterested, 3 = just the guards take notice, 5 = bees jumping & bumping, 7 = colony starts to roar and 10 = unable to work



- BAR INSPECTION** The two rows of 16 bars represent your Beepod's maximum chamber. Draw a line where your follower bars define the actual inner chamber. Combine the letters from the table with numbers 1-10 to denote whats on each bar. Start with a C 1..10 to tell how much comb is drawn. 1-10 plus a zero means, 20, 30%... (H3 means 30% of the bar's comb is honey) . Where necessary, note each side of the bar separately.

Found on Bars

A - Attached Walls	D - Drone Brood	H - Honey	N - Nectar	Q - Queen Cells	W - Wavy Comb	- Joined Comb
B - Brood	E - Eggs	K - Dead Bees	P - Pollen	S - Swarm Cells	- Honey Spacers	- Removed Bar
C - Total Comb	F - Fondant	L - Larva	- Queen	T - Tea Cup	X - Unused/ new	- Added Bar(s)



Queen Cells Found Y N

Swarm Cells **Supersedure** **Emergency** **Tea Cups**

Queen Cell Content: eggs royal jelly larva capped emerged old

Swarm Split Y (N) Separate cells and flip Beepod

Mite Check Y (N) treatment:

Feeder Jar Use Sugar:Water 2:1 1:1 (1:2) water

Observations and Actions: Bees are super busy collecting pollen... waggles dances everywhere
Saw Queen laying eggs! Wasps are trying to get in but bees defend!
Saw first Drone Cells of the year.... hive is rockin!

Assessment : Check Feeder jar in three days cuz bees are drinkin it up!

Next Time bring: bars ~~spacers~~ knife HarvestBox followerbar ventboard tool ~~camera~~ magnifier _____

Bars Total: 12
Harvest for Bees: 0
Harvest for Me: 0
Bee stings: 1
End Time: 11:40a